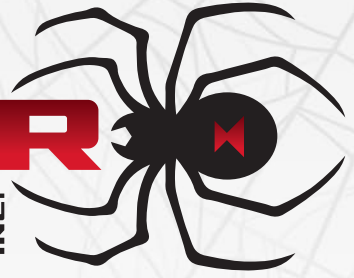


SPIDER HITCH INC.



INSTALLATION GUIDE & OPERATOR'S MANUAL

GENERAL GUIDELINES

1. Please read the following instruction carefully and use the product accordingly.
2. This summary may not include every detail of all variations and considered steps. Please contact us when further information and help are needed.

WARNINGS

1. Please do not use the product if there is/are defective and/or missing part/s, as this can result in damage or injury.
2. **DO NOT** use hands to guide winch rope back onto winch.
3. **DO NOT** use winch feature if danger of attachment free rolling towards winch.
4. Always keep hands clear of winch rope when operating the winch.
5. Stand back from winch rope approximately 30 feet when operating the winch to ensure user safety.
6. **DO NOT** use Spider Hitch for pulling out stuck combines or towing anything over 25,000lbs.

WARRANTY

Spider Hitch has a one-year manufacturers warranty. This warranty does not apply if the product has been damaged by accident, abuse, misuse, collision, overloading, modification, misapplication, improper installation, improper service.

Warn winch warranty is provided by Warn Winch directly. All documents must be registered with Warn winch.

NOTES

Personal injury and/or damage to the product may occur if products are used outside of their intended purposes and/or if products have been changed/modified from their original design. The product must be assembled and used in accordance with the provisions of the manual. The seller does not assume any responsibility or liability with respect to any damage caused by incorrect assembly or improper use.

PARTS LIST

WINCH ITEMS

Warn Winch Wireless/Wired Remote Controls
 175 Amp Connector Plug
 Warn Winch Warranty & Installation/Instruction Guide

INSTALLATION KIT HARDWARE

- M20 x 200mm GR10.9	2.5mm Pitch Bolt	QTY 4
- M20 x GR10.9	2.5mm Pitch Lock Nut	QTY 4
- M16 x 100mm GR10.9	2mm Pitch Bolt	QTY 4
- M16 x 75mm GR10.9	2mm Pitch Bolt	QTY 4
- M16 x GR10.9	2mm Pitch Lock Nut	QTY 4
- 5/8 GR8 (F436)	Flat Washer	QTY 4
- 13/16 x 1 1/4 DOM	Spacer Bushing	QTY 4

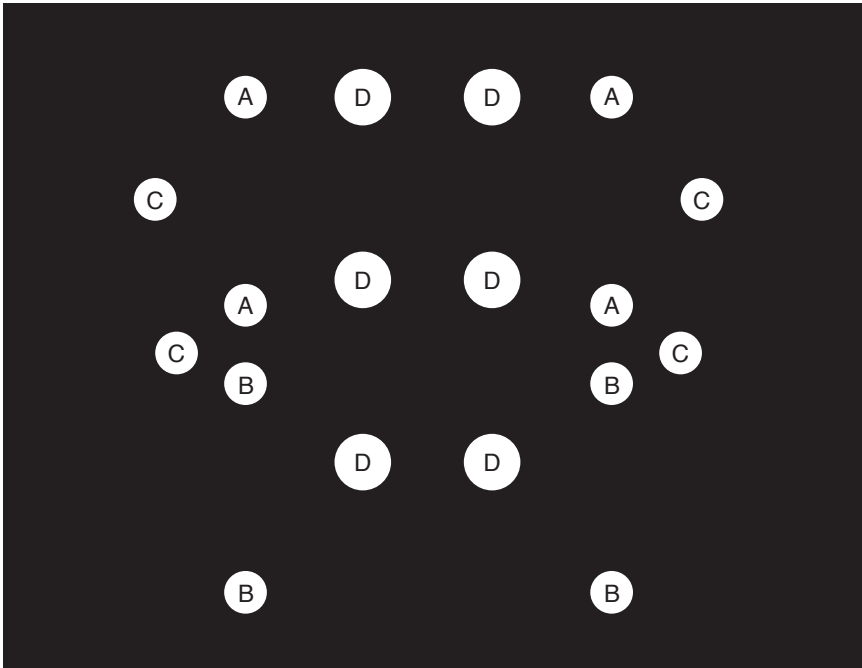
COMBINE MAKE & MODEL	PARTS REQUIRED
LEXION (OLDER MODEL)	4x - 16mm X 75mm Bolts 4x - 16mm Lock Nuts 4x - Spacer Bushings 4x - Flat Washers
LEXION (NEWER MODEL)	4x - 16mm X 75mm Bolts 4x - 16mm Lock Nuts 4x - Spacer Bushings 4x - Flat Washers
JOHN DEERE X9	4x - 16mm X 75mm Bolts 4x - 16mm Lock Nuts 4x - Spacer Bushings 4x - Flat Washers
JOHN DEERE S-SERIES	4x - 20mm X 200mm Bolts 4x - 20mm Lock Nuts 4x - Spacer Bushings
CASE IH 8250 & 9250	4x - 16mm X 75mm Bolts 4x - Spacer Bushings 4x - Flat Washers
NEW HOLLAND CR 9.9 & CR 10.90	4x - 16mm X 75mm Bolts 4x - Spacer Bushings 4x - Flat Washers

INSTALLATION

For installation to equipment, see table below and find the reference letter. The image will show which pattern to use to install your hitch to your machine.

Determine which equipment type you are installing the Spider Hitch on.

MOUNTING PLATE HOLE PATTERN GUIDE	
COMBINE MAKE & MODEL	MOUNTING PLATE HOLE PATTERN
LEXION (OLDER & NEWER MODEL)	A
JOHN DEERE X9	B
JOHN DEERE S-SERIES	D
CASE IH 8250 & 9250	C
NEW HOLLAND CR 9.9 & CR 10.90	C



STEP 1

1. Move hitch close to machine for installation.
2. Disengage the winch drum clutch.
3. Unspool approximately half the winch line.
4. Unbolt the winch from the hitch frame.
5. Slide the winch to the left and out of the frame (winch will need to drop in order to slide out).
6. Insert mounting bolts specific to your equipment (refer to charts above to determine which bolt pattern you require and which hardware you will use).
Spacer Bushings are used between combine and Spider Hitch Frame.
7. Mount hitch frame to combine. *Use caution when lifting and use help if required, may require 2 people to attach.
8. Follow torque specifications for bolts used.

TORQUE SPECS

BOLT	TORQUE
16mm Diameter Bolt	325 Nm (240 ft-lbs)
20mm Diameter Bolt	624 Nm (460 ft-lbs)

STEP 2

Once hitch is fully mounted to the combine, reinsert winch into the hitch frame and insert the winch bolts (using original bolts that were removed in step 1).

Torque bolts to specified torque as per Warn Winch Owner's Manual (30-35 ft-lbs).

STEP 3

Using the supplied 175 Amp Winch Connector Plug use owner supplied 2-gauge battery cable to connect winch to battery following Instructions In the Warn winch Installation Guide.

Warn does not recommend installing a fuse at the supply battery to protect the battery cable, although some customers have installed a 300 Amp resettable interrupter breaker as a precautionary measure.

Once battery is connected, respool winch line following the instructions in the Warn Winch Operator's Manual until fully retracted.

- While respooling, you will need to use a tool (wooden dowel or rod) to move the winch line side to side to allow the winch to respool evenly.

****DO NOT USE HANDS TO GUIDE WINCH ROPE BACK ONTO WINCH**

HOW TO HOOK UP YOUR TRAILER/WAGON

Prior to using Spider Hitch, please read through the safety instructions for the Warn Winch (included in the operator's user package).

Install 1 1/4" shank ball in Spider Hitch tongue if required.

STEP 1 - PREPARING TO ATTACH TRAILER

1. Shut combine down, put the machine in Park and apply Park Brake.
2. Raise the straw chopper and fold unloading auger (if equipped) to ensure clearance between the header, and the auger, spout, and rear of combine.



Make sure the combine is parked slightly uphill from the trailer prior to hooking up the Spider Hitch to prevent trailer from free rolling towards combine.

****DO NOT USE WINCH FEATURE IF DANGER OF ATTACHMENT FREE ROLLING TOWARDS WINCH**

STEP 2 - ATTACHING TRAILER TO WINCH

Using the clutch lever on the winch, turn counterclockwise to disengage winch drum.



Pull up on the release handle at the front of the hitch and start pulling the winch line out.



Attach winch line to trailer hitch by using the proper size hitch pin and security clip. If using a ball hitch, attach directly to ball. Once attached, remove chocks.

STEP 3 - WINCHING TRAILER & ATTACHING TO COMBINE

NEVER OPERATE WINCH WITH LESS THAN 10 WRAPS AROUND THE DRUM

ALWAYS KEEP HANDS CLEAR OF WINCH ROPE

Return to the winch and turn the clutch lever clockwise to engage the winch drum.

Turn on the power to the fob by pressing the power button.

STAND BACK A SAFE DISTANCE FROM WINCH AND ROPE

Press the “winch power in” button to start pulling the trailer towards the combine.

Once the trailer hitch has come into contact and locked onto the combine attach safety chains and make sure that latch mechanism is engaged.

DO NOT USE SPIDER HITCH FOR PULLING OUT STUCK COMBINES OR TOWING ANYTHING OVER 25,000 LBS



Phone: (780) 837-6801

Email: service@spiderhitch.ca

